



FEATURES:



7 Occupancy



3 Bedroom



2 Bathroom



3 Car Parking



Pets Accepted



Strict NO Party Policy



Full Kitchen



DVD Player



Linen Included



Washing Machine



Family Friendly



Full Size Fridge



Tumble Dryer

ABOUT THIS PROPERTY

Backing on to reserve land this well maintained and appointed free standing 3 bedroom chalet accommodates 7. There is a garage & onsite parking for up to 2 other vehicles. Symbar is ideally located, close to a shuttle bus stop & village snow play area.

The entry foyer doubles as the drying room, and there is an internal door to the garage from this area. The ground floor living / kitchen / dining area is heated by a huge stone open fire place. The kitchen is fully equipped and there are comfortable window seats and sofas in the living area. There is a bathroom and laundry off the living area. Upstairs there are three bedrooms and a bathroom. The main bedroom has a queen bed, the second bed has a set of bunks and a single bed and the third bedroom has two single beds. Very heavily booked for family holidays. Need to book early for this house.

KITCHEN & COOKING FACILITIES

Fully equipped kitchen

BBQ

BEDROOMS & BEDDING CONFIGURATION

This property sleeps 7 people.

There are 3 Bedrooms with the following configuration.

Bedroom 1: 1 x Queen Bed

Bedroom 2: 1 x Bunk Bed (2 singles) and 1 x Single Bed

Bedroom 3: 2 x Single Beds

Linen, Towels and Bedding is provided for all beds.

BATHROOMS

Two bathrooms, one on each level, downstairs is combined with the laundry

HEATING & COOLING FACILITIES

Open fire place

Gas Space Heater

Panel Heating

LAUNDRY DETAILS

Combined bathroom / laundry

Washing machine, Clothes dryer

A drying room is available at this property

ENTERTAINMENT FACILITIES

TV x 2

DVD Player x 1

EXTRA FACILITIES

A drying room is available at this property

PARKING

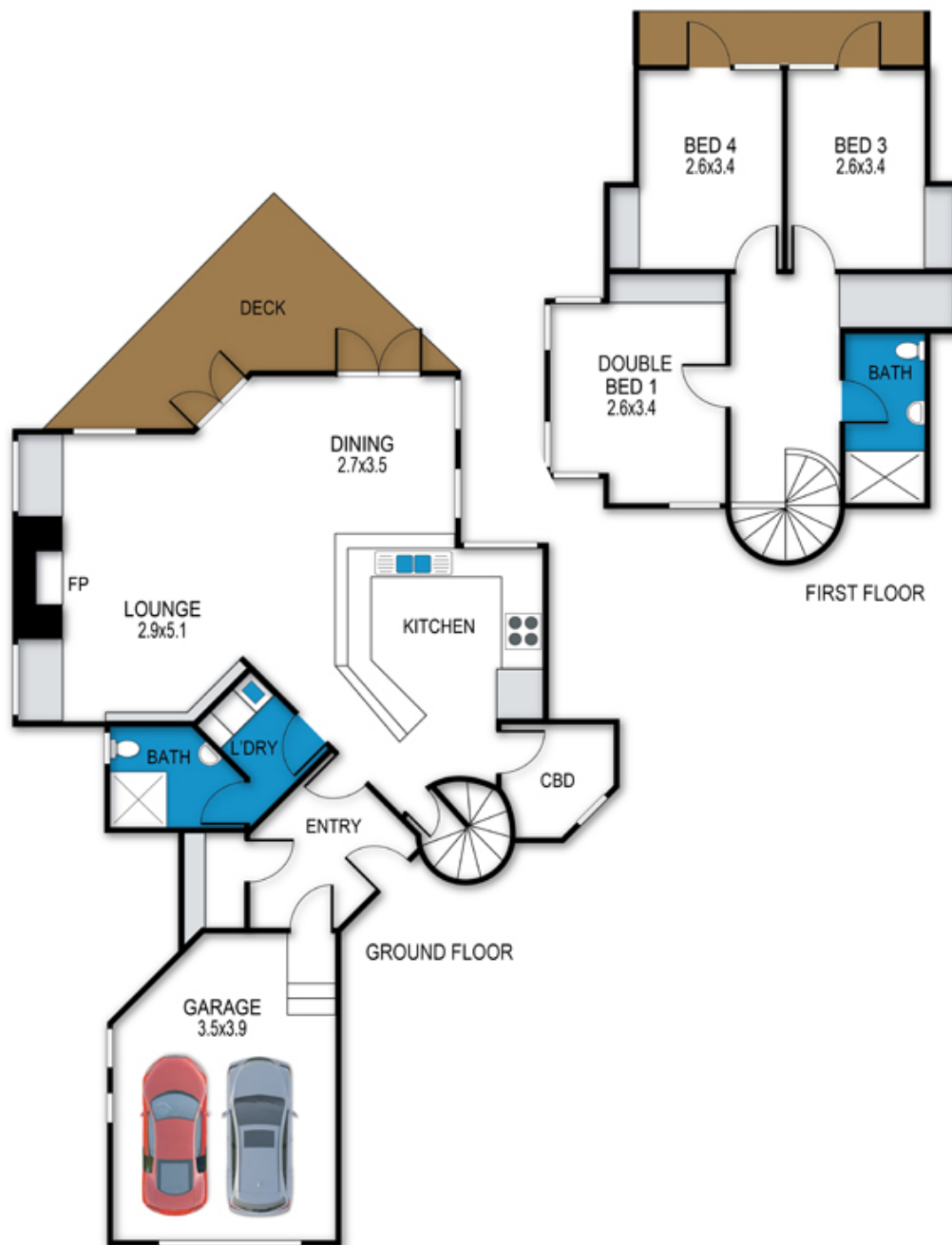
3 car parks in total with a garage plus additional 2 spaces

PETS

Pets allowed with a fee of \$50, please enquire with our staff for further information

Symbar

49 Big Muster Drive, Dinner Plain



archistyle

Whilst every attempt has been made to ensure the accuracy of this floorplan, measurements of doors, windows, rooms and any other items are approximate only. The producer or the agent cannot be held responsible for any errors, omissions or misstatements. This plan is for illustrative purposes only and should be used as such.

