



FEATURES:



10 Occupancy



4 Bedroom



2 Bathroom



2 Car Parking

ABOUT THIS PROPERTY

Woodrun in Dinner Plain has been recently built to the highest of standards, the floor to ceiling windows in the living space make the most of the fantastic views across the Alpine National Park.

Woodrun is within walking distance of restaurants, cafes and shops and provides the perfect base for your family getaway.

The mezzanine level provides a separate retreat for the kids.

KITCHEN & COOKING FACILITIES

Full Kitchen

Full Size Fridge

Dishwasher

Microwave

Lavazza Coffee Pod Machine

Full Size Oven

4 Burner Cooker

Gas BBQ

BEDROOMS & BEDDING CONFIGURATION

This property is ideal for 10 people

There are four bedrooms with the following configurations

Bedroom 1: 1 x Queen bed

Bedroom 2: 1 x Queen bed

Bedroom 3: 1 x Bunk bed and 1 x trilogy bunk bed (5 share room)

Bedroom 4: 1 x Queen bed

Linen, Towels and Bedding is provided for all beds.

BATHROOMS

Two bathrooms with a bath in the main family bathroom.

Two additional powder rooms.

HEATING & COOLING FACILITIES

Hydronic heating

LAUNDRY DETAILS

Laundry located on the ground level

ENTERTAINMENT FACILITIES

WIFI

Flat Screen 50" Apple smart TV

EXTRA FACILITIES

Gas BBQ

PARKING

Driveway Parking

Carport Parking

2 car spaces

PETS

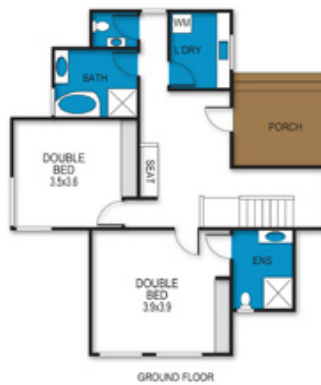
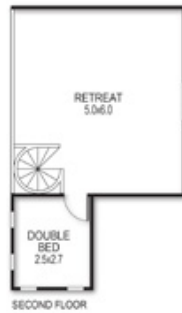
Strictly no pets allowed

SMOKING

Strictly no smoking indoors

Woodrun

13 Roney Macs Twist, Dinner Plain



archistyle

Whilst every attempt has been made to ensure the accuracy of this floorplan, measurements of doors, windows, rooms and any other items are approximate only. The producer or the agent cannot be held responsible for any errors, omissions or misstatements. This plan is for illustrative purposes only and should be used as such.